

Blueproof™

fire protection for the safety of your home

Fitting Instructions



CE mark: 0038

Buy time **Saves lives**

www.blueproof.co.uk



Thank you for ordering Blueproof, the revolutionary Fire suppressant device.

Smoke inhalation is the largest cause of loss of life in fires by reducing smoke and dramatically lowering the temperature in both the room of activation and wider building, Blueproof can allow you, your loved ones or your tenants valuable time to escape.

This booklet will guide you through the installation of Blueproof, and will also offer some other information you may find useful. Once installed Blueproof could reduce your insurance premium. Contact your insurer to arrange a reduction.

If you have any questions or would like further information, please see the contact details later in this Booklet.



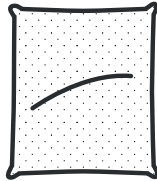
How to Install

Blueproof has been designed for easy installation, and by following these instructions you should be able to install Blueproof yourself.

You will need:



Spanner



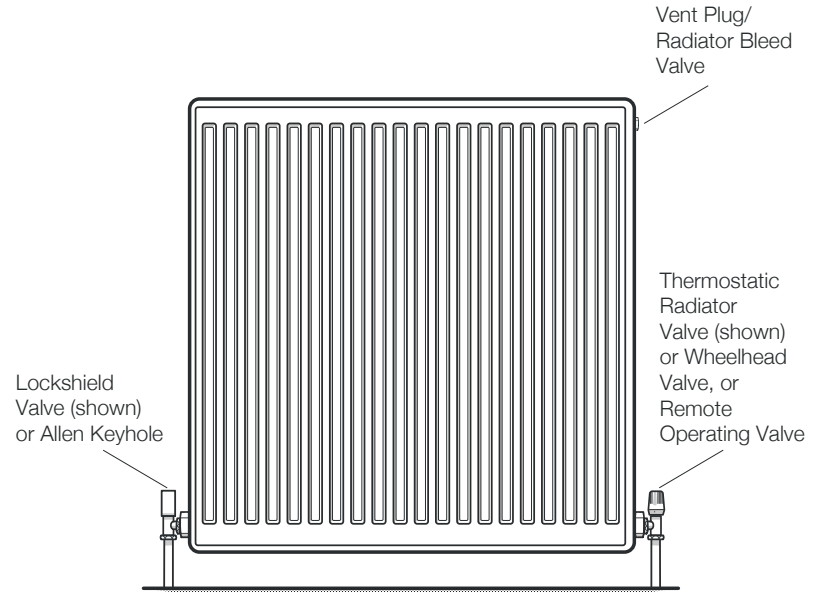
Rag



Bowl
(to collect excess water)

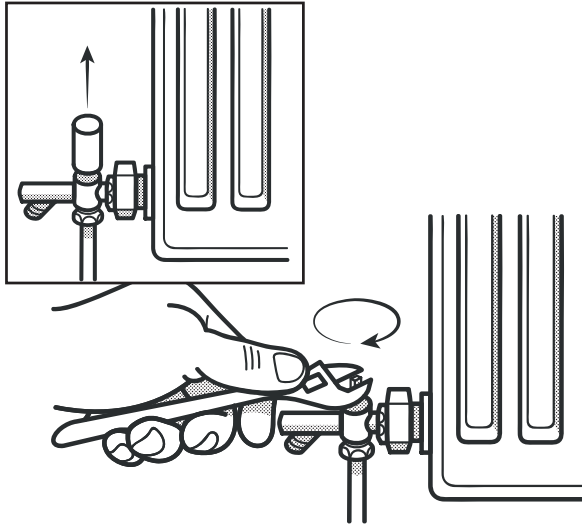
1.

Switch off the central heating system and allow it to cool. Your radiator has the following valves:



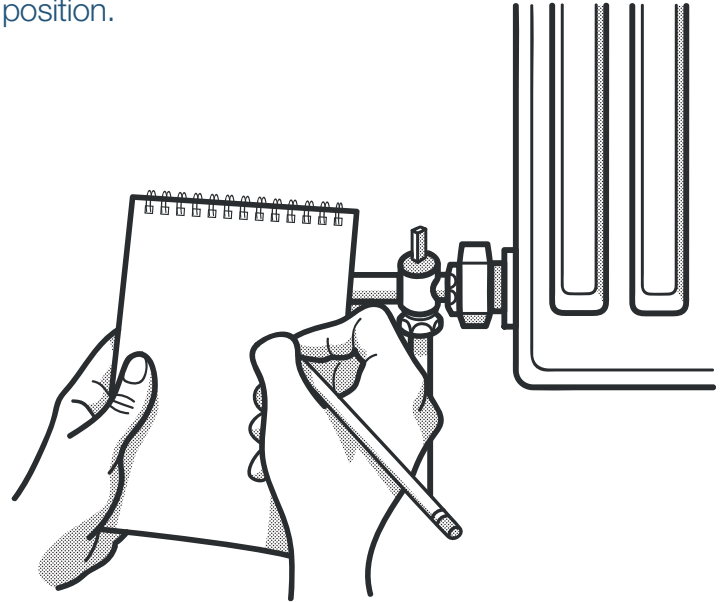
2.

Isolate the radiator by closing the isolation valves. This valve could be a lockshield valve with a plastic cap. Remove the cap then, by using an adjustable spanner, turn the spindle clockwise.



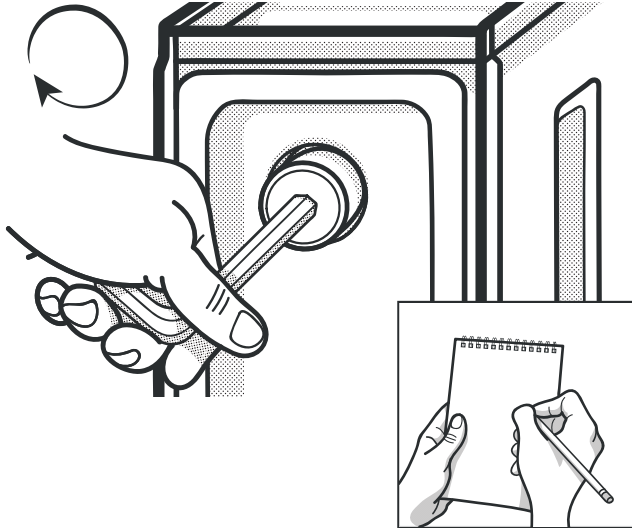
3.

Count the number of revolutions and half-revolutions until you can't turn the spindle any further. Make a note of this number as the valve is used to balance the system and must be returned to the same position.



4.

Instead of a lockshield valve, you might have an isolation valve that requires a 5/16th hexagonal Allen Key inserting. Turn clockwise to close the valve. Again, you should count the number of revolutions and half-revolutions until you can't turn the Allen key any further, and make a note of this number.



5.

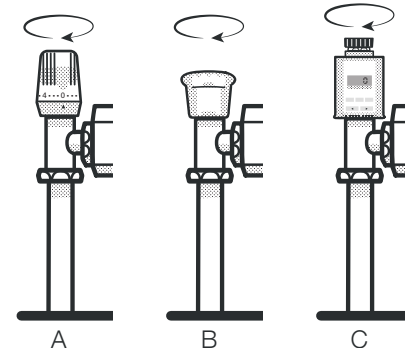
Now that the isolation valve is closed, it's time to turn your attention to the second valve. This will be a thermostatic valve, a wheelhead valve or a remote operating valve.

A thermostatic valve should be turned to '0' setting (A)

A wheelhead valve should be turned by hand (B)

A remote operating valve is closed by turning the manual override wheel by hand (C)

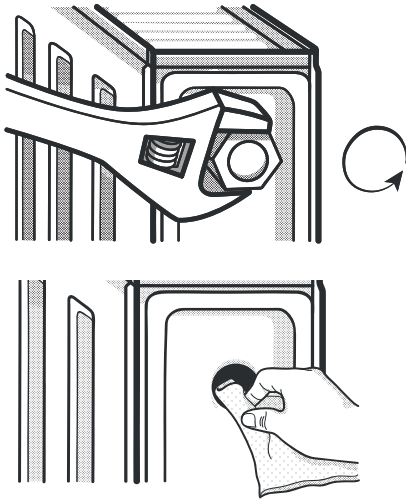
If you're uncertain, refer to the instructions of your radiator manufacturer



6.

Remove the vent plug – also known as a radiator bleed valve – from the radiator and clean the threads.

DO NOT use the Blueproof spanner as it might warp or break the vent plug. When removing the existing vent plug, ensure the level of water in the radiator reaches the bottom thread. If in doubt, open the inlet valve until water weeps from the housing.

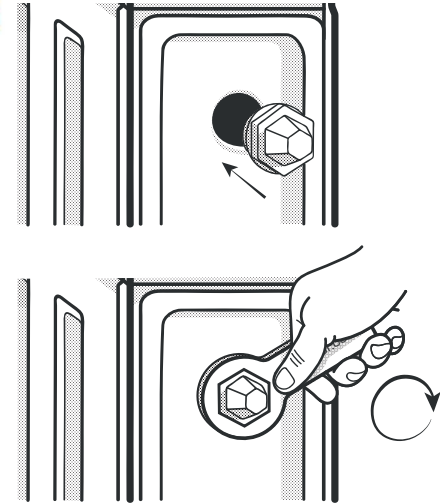


7.

Using the spanner supplied with Blueproof screw Blueproof directly into the half-inch BSP female thread of the vent plug housing. Ensure it is as tight as possible.

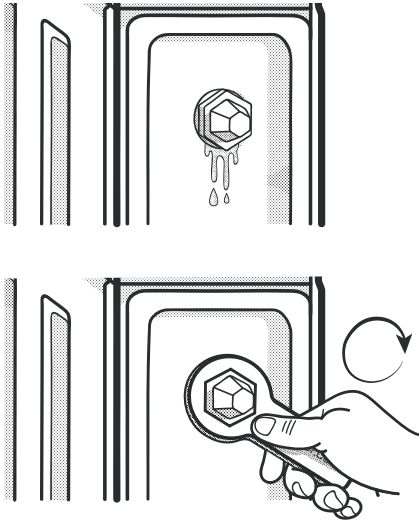


Make sure Blueproof is fitted to the top of the radiator, NOT the bottom.



8.

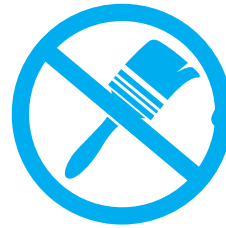
Open both isolation valves to check whether any water is leaking around Blueproof. If so, close the isolation valves and tighten Blueproof using the spanner supplied with the device.



9.

Once Blueproof is fitted correctly, you're ready to balance the system. You'll need to check the number of revolutions and half-revolutions that you noted down earlier for both isolation valves and turn them anticlockwise accordingly.

Warning



DO NOT paint Blueproof under any circumstances. Covering the surface of Blueproof will make it unable to activate during a fire, which could prove lethal.



You must **NEVER** apply polishes, paints, or solvents, as they will prevent Blueproof from working properly.

Product Lifespan

While Blueproof has a minimum lifespan of up to 5 years, it has been designed to last far longer; if kept out of direct sunlight it is possible Blueproof could last for up to 20 years.

We recommend, however, that Blueproof be inspected after 5 years. This allows you to ensure the mechanical properties of the material have not degraded, as this might reduce the effectiveness of its performance during a fire.

Maintenance

Blueproof does not need any maintenance other than periodic dry dusting. To vent/bleed the radiator simply slacken Blueproof to allow air to escape.

Disclaimer

It is the responsibility of the person in charge of a property to take all the necessary steps to prevent injury to inhabitants. Information supplied in this leaflet is supplied only to provide an improved understanding of the technical aspects of Blueproof and, as far as the law allows, Bluerad will not accept liability for any loss or damage claimed as a result of reliance on this information.

Contact Us

Bluerad No.1 LLP

Call: **0115 906 1325**

info@bluerad.co.uk

www.blueproof.co.uk



Facebook/**blueproof**



Blueproof



@blueproofUK

www.blueproof.co.uk

